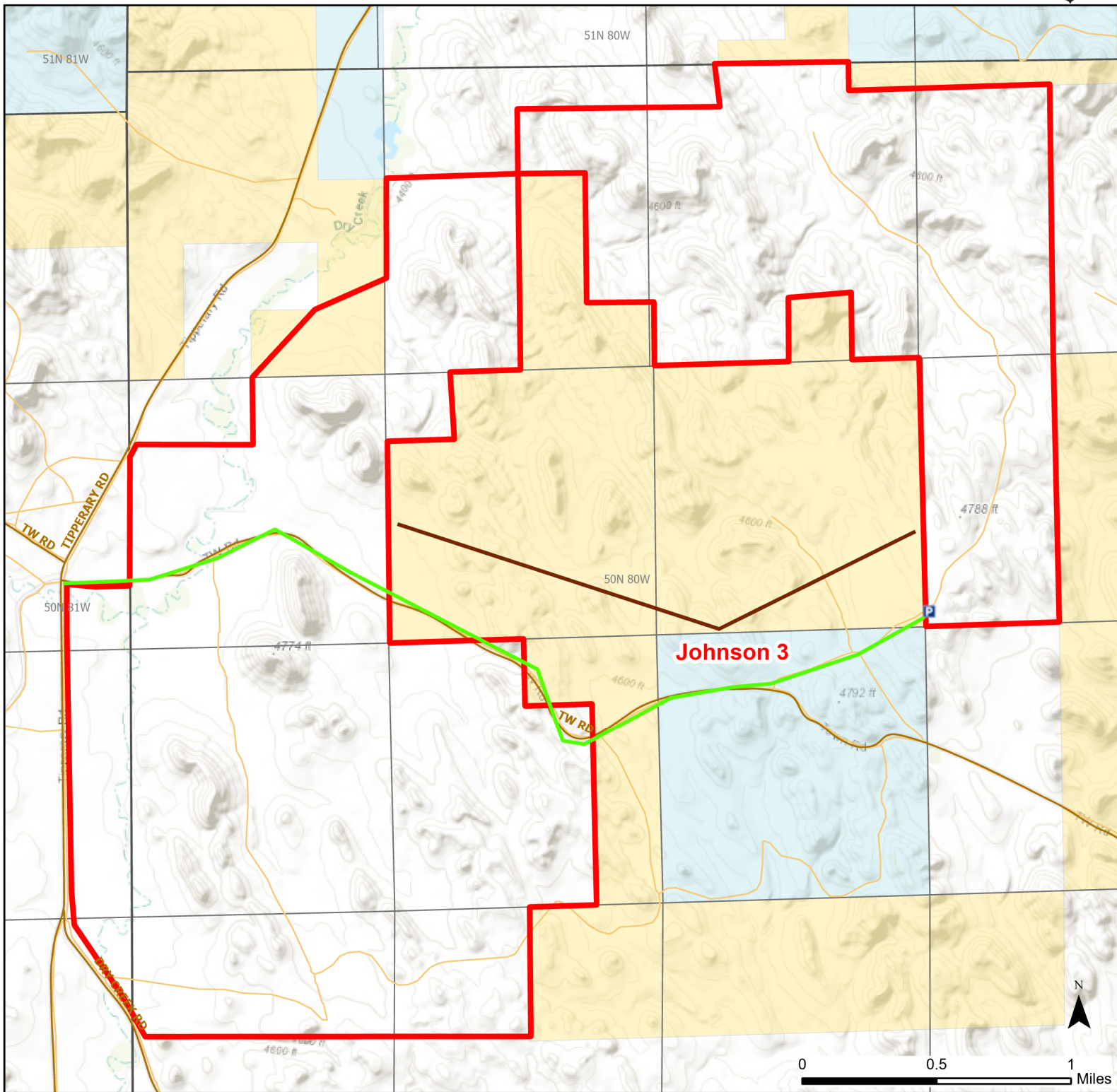




Johnson 3 Walk-in Hunting Area

Access Dates:
08/15 - 12/15
2023 Hunt Season



Species allowed to hunt: Waterfowl, Sharp-tail Grouse, Doves, Partridge, Rabbit, Antelope, Deer

Rules: NO MULE DEER DOE HARVEST ALLOWED

This map is for visual use, assistance and general location only, does not represent a survey, and is not to be used for legal conveyance. Hunt Area boundaries are approximate, consult Game and Fish Hunting Regulations for descriptions and restrictions. Access to these private lands for any commercial activity must be gained by contacting the individual landowner(s) directly.